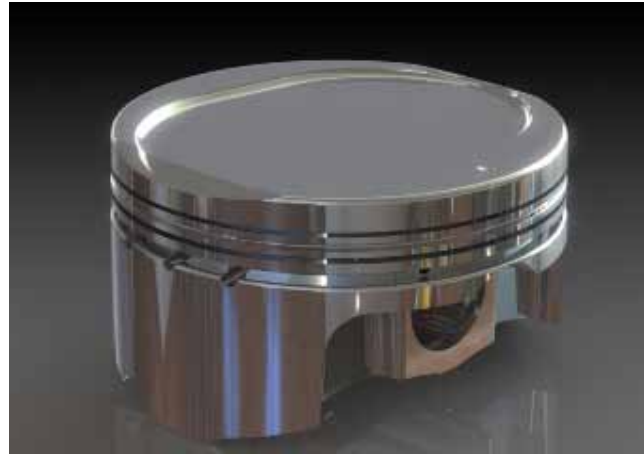


New Product

Chrysler 5.7L -10cc Dish & 6.7L Hemi -13cc Dish

Automotive



Features

- Dedicated forging
- Generous valve reliefs
- 2618 Material
- Experience
- ArmorGlide™
- New Strutted forging, Light-weight, superior strength
- Allows more cam and valve options
- Improved strength and durability
- Over 70 years as the industry leader in forged piston technology
- Pistons have wear and friction reducing skirt coating

Benefits

All Wiseco Automotive kits come with pins and clips.
All pistons have ArmorGlide™ skirt coating for improved wear and friction reduction.

Prices (US): Kit \$842.80 • Repl. Piston \$105.35

6.1L 426cid • 4.080" Stroke (.866" pin)

Kit Part #	Bore	Comp. Ht.	Stroke	Rod	0 Deck at	Std. Deck Ht.	Avg. Wt.	Volume	Compression ratio at:			Pin Part # (included)	Std. Tension Rings 1.2 / 1.2 / 3mm (included)	Skirt Type
									65cc 2009+ 5.7L	73cc All 6.1L	85cc Pre '08 5.7L			
K0037X05	4.060											S747	4062GFX	Strutted
K0037X25	4.080	1.080	4.080	6.125	9.245	9.250	-	-13cc	11.1	10.3	.866 x 2.250	4082GFX		

Prices (US): Kit \$778.27 • Repl. Piston \$92.28

5.7L Stock Stroke (.927" pin)

Kit Part #	Bore	Comp. Ht.	Stroke	Rod	0 Deck at	Std. Deck Ht.	Avg. Wt.	Volume	Compression ratio at:			Pin Part # (included)	Std. Tension Rings 1.0 / 1.2 / 2.8mm (included)	Skirt Type
									65cc 2009+ 5.7L	73cc All 6.1L	85cc Pre '08 5.7L			
Must use K1 or aftermarket rod														
K0036XS	3.917												9950XX	Strutted
K0036X05	3.922	1.205	3.580	6.243	9.238	9.250		-10cc Dish	9.5	8.8	8.0	S643	9975XX .005 file fit	
K0036X25	3.937											.927 x 2.250	10000XX	